

Summary of results from MPRB

There was an average of 434 beetles across all sites and sampling times for all 44 sites sampled in 2022. MPRB sites are summarized below, with average beetle numbers listed.

Table 1: Highest number of beetles at each site. Greatest number of beetles are in bold font.

Site	Date	Peak number of beetles	Mean number of beetles/MPRB sites (434 mean beetles for the entire metro area)
Theodore Wirth	7/19	285	89
Columbia	7/12	453	193
<b>Fort Snelling</b>	<b>7/22</b>	<b>3697</b>	<b>974</b>
<b>Hiawatha</b>	<b>7/22</b>	<b>3559</b>	<b>1037</b>
Meadowbrook	7/19	1784	564
<b>Francis Gross</b>	<b>7/12</b>	<b>3360</b>	<b>1501</b>
Lyndale Park	7/22	423	121
Thomas Sadler	7/22	147	44
Peace Garden	7/22	423	161
Longfellow Gardens	7/22	254	110
Loring Park	7/19	147	49
Sculpture Garden	7/19	208	60

# 1. Theodore Wirth Golf Course maintenance shed

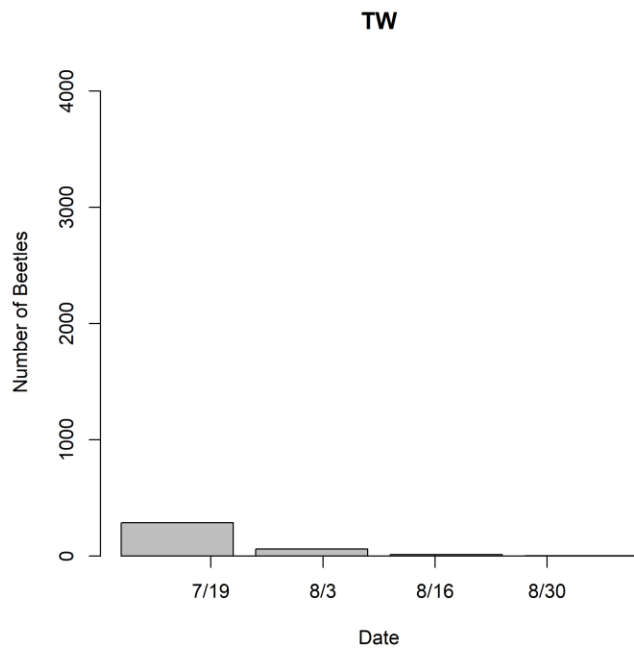


Figure 1: Theodore Wirth GC number of Japanese beetles at 4 sampling times. There was an average of 89 beetles across the 4 sampling times. There were less beetles than the overall average (434).



Figure 2: Aerial view of Theodore Wirth GC.

## 2. Columbia Golf Course maintenance shed

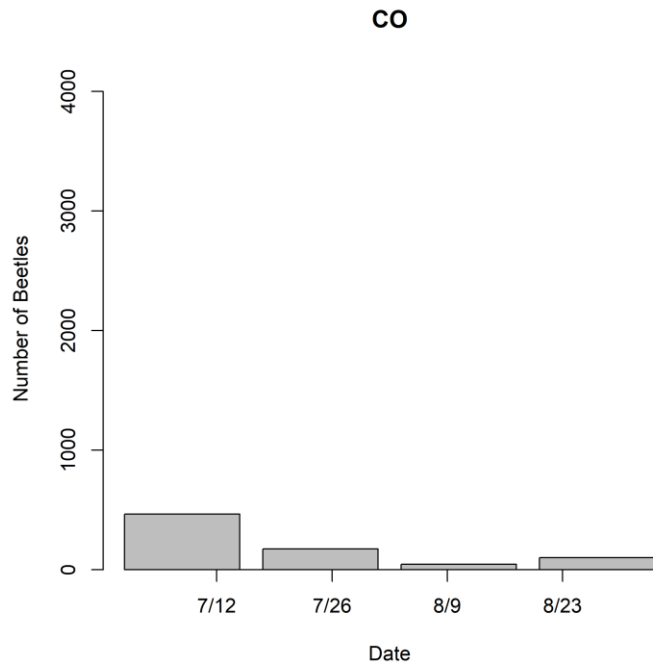


Figure 3: Columbia GC number of Japanese beetles at 4 sampling times. There was an average of 193 beetles across the 4 sampling times. There were less beetles than the overall average (434).

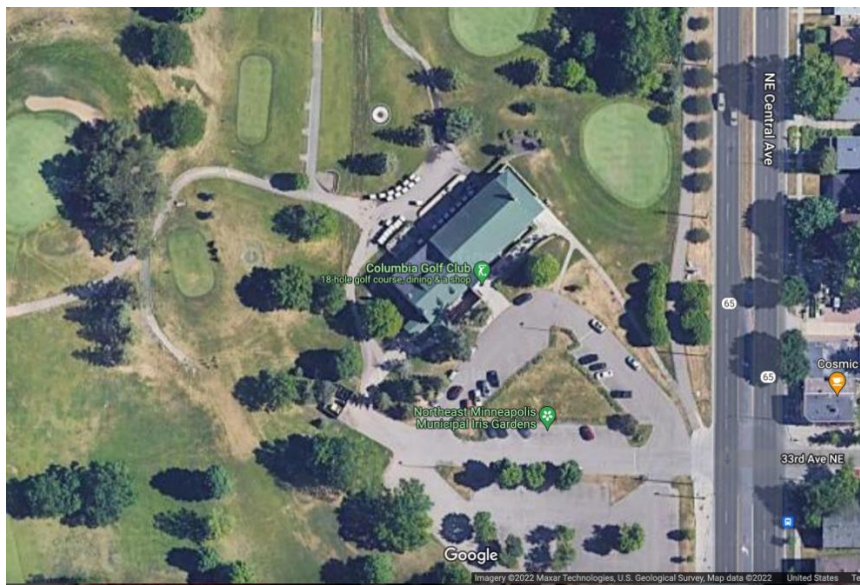


Figure 4: Aerial view of Columbia GC.

### 3. Fort Snelling Golf Course maintenance shed

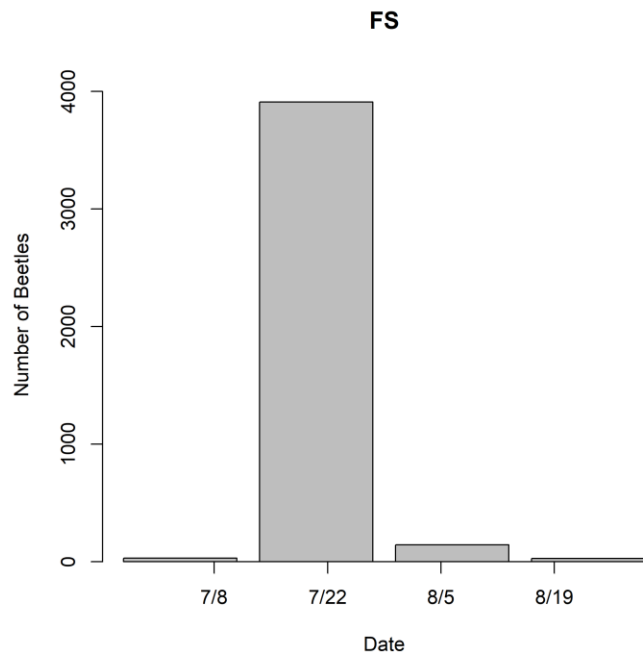


Figure 5: Fort Snelling GC number of Japanese beetles at 4 sampling times. There was an average of 974 beetles across the 4 sampling times. There were more beetles than the overall average (434).

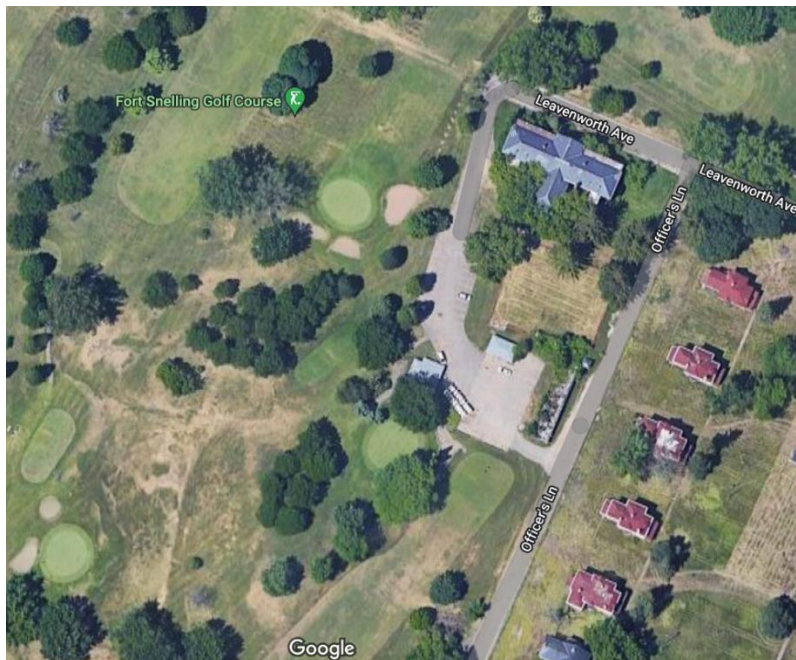


Figure 6: Aerial view of Fort Snelling GC.

4. Hiawatha Golf Course maintenance shed

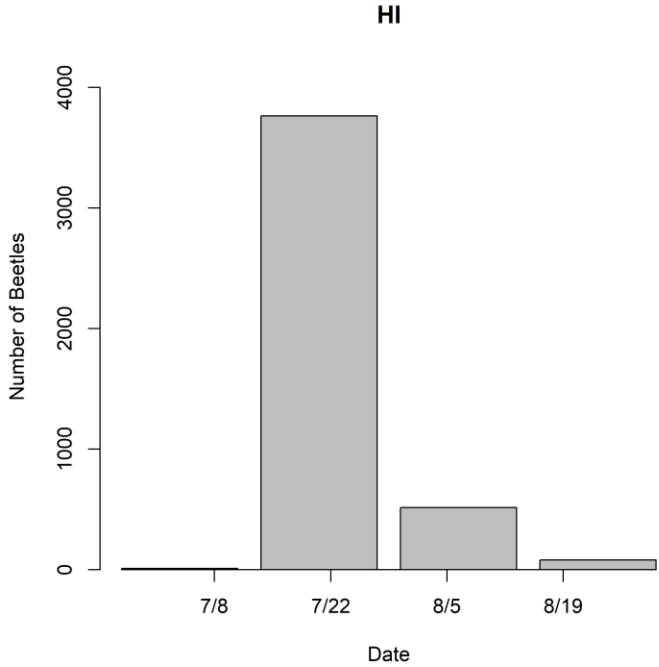


Figure 7: Hiawatha GC number of Japanese beetles at 4 sampling times. There was an average of 1037 beetles across the 4 sampling times. There were more beetles than the overall average (434).



Figure 8: Aerial view of Hiawatha GC.

### 5. Meadowbrook Golf Course maintenance shed

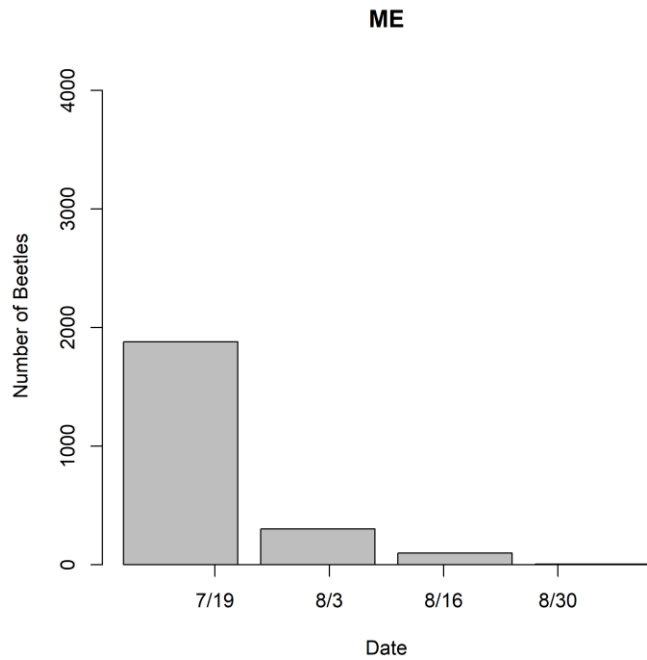


Figure 9: Meadowbrook GC number of Japanese beetles at 4 sampling times. There was an average of 564 beetles across the 4 sampling times. There were more beetles than the overall average (434).

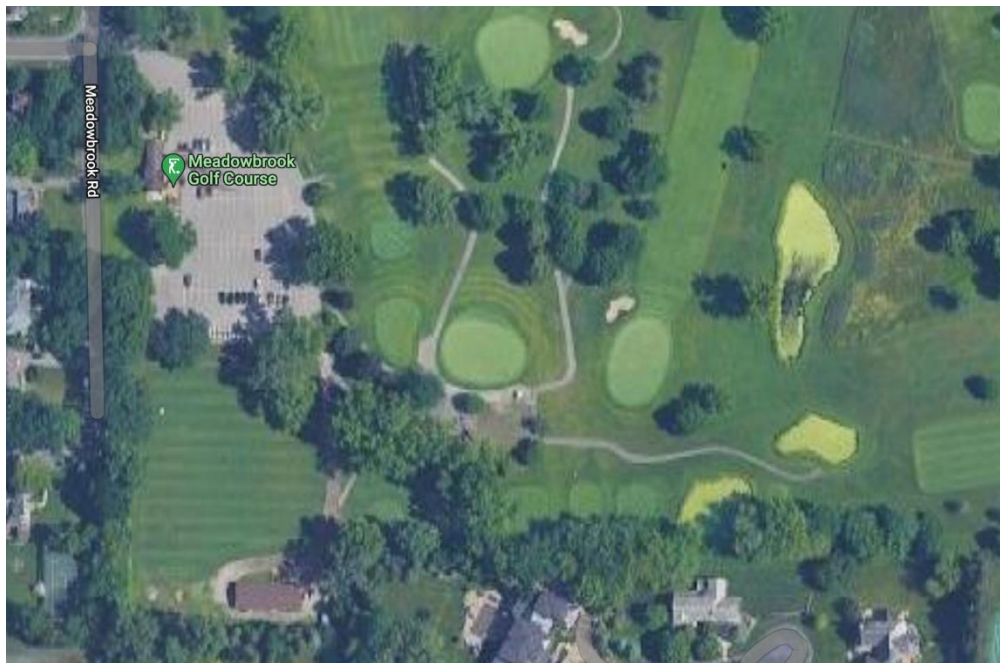


Figure 10: Aerial view of Meadowbrook GC.

### 6. Francis Gross Golf Course maintenance shed

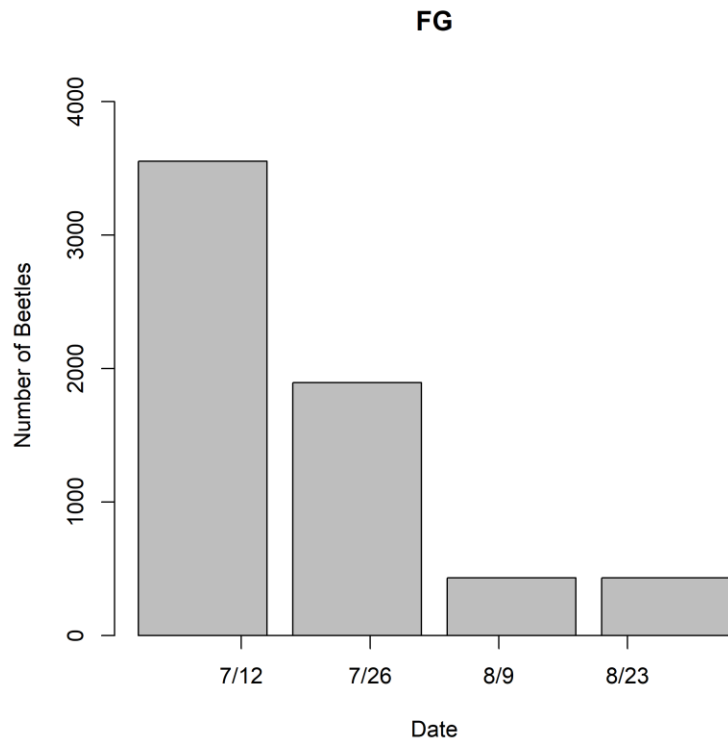


Figure 11: Francis Gross GC number of Japanese beetles at 4 sampling times. There was an average of 1501 beetles across the 4 sampling times. There were more beetles than the overall average (434).

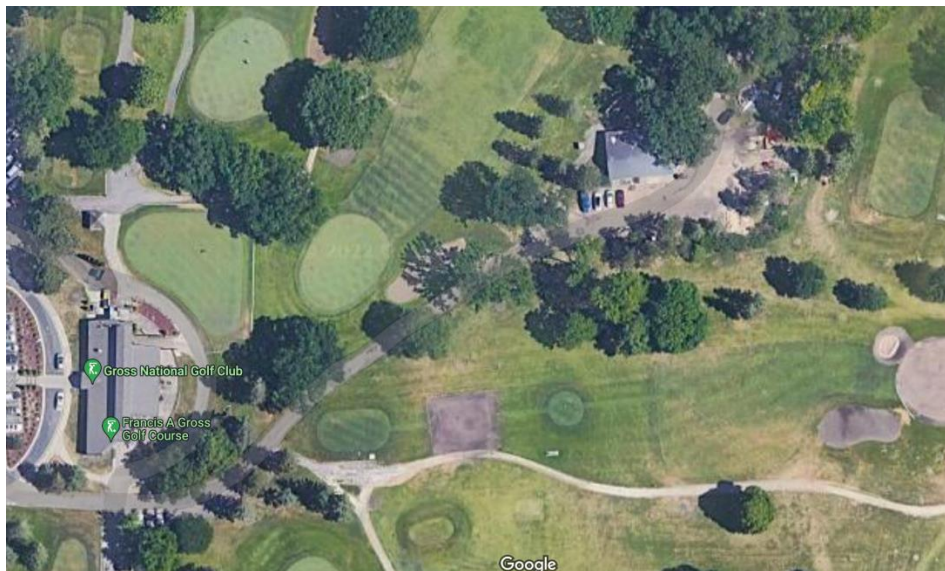


Figure 12: Aerial view of Francis Gross GC.

7. Lyndale Park rose garden maintenance shed

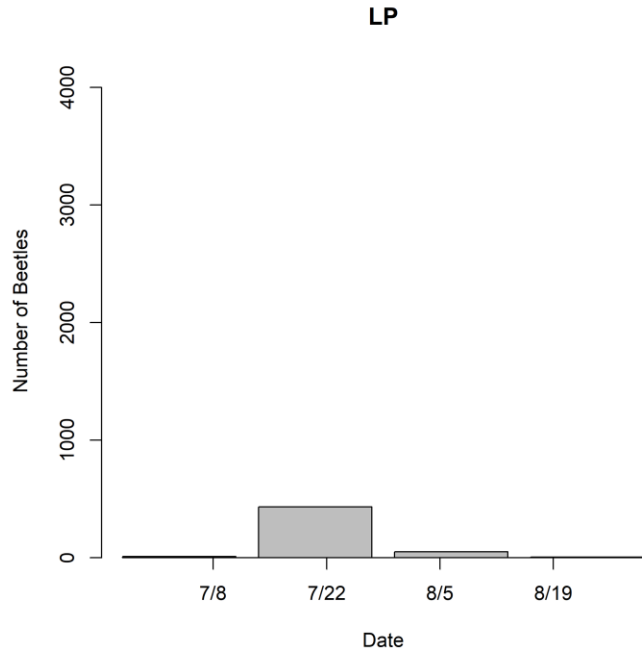


Figure 13: Lyndale Park Rose Garden number of Japanese beetles at 4 sampling times. There was an average of 121 beetles across the 4 sampling times. There were less beetles than the overall average (434).

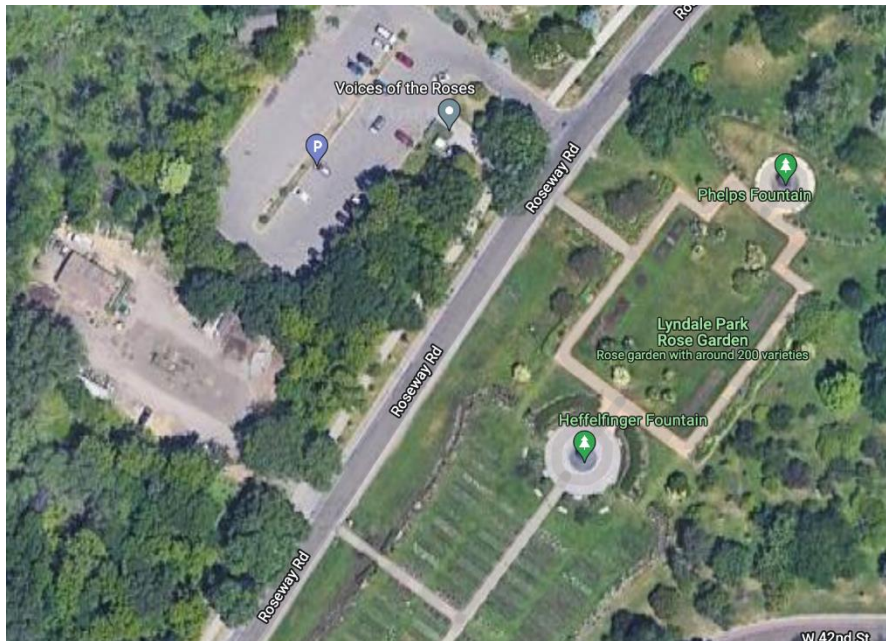




Figure 14: Aerial view of Lyndale Park Rose Garden.

8. Thomas Sadler Roberts Bird Sanctuary and Peace Garden

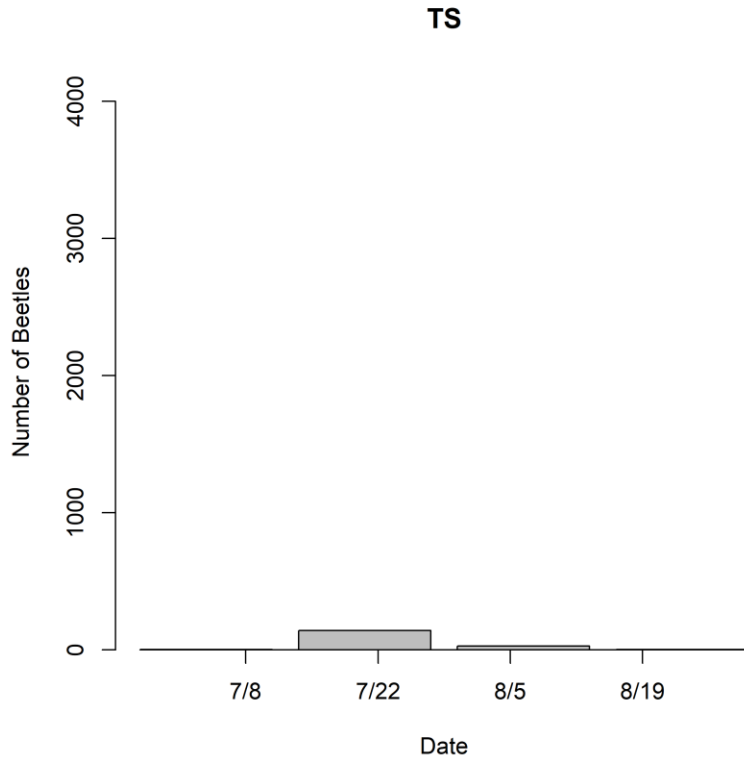


Figure 15: Thomas Sadler Bird Sanctuary number of Japanese beetles at 4 sampling times. There was an average of 44 beetles across the 4 sampling times. There were less beetles than the overall average (434).

**PG**

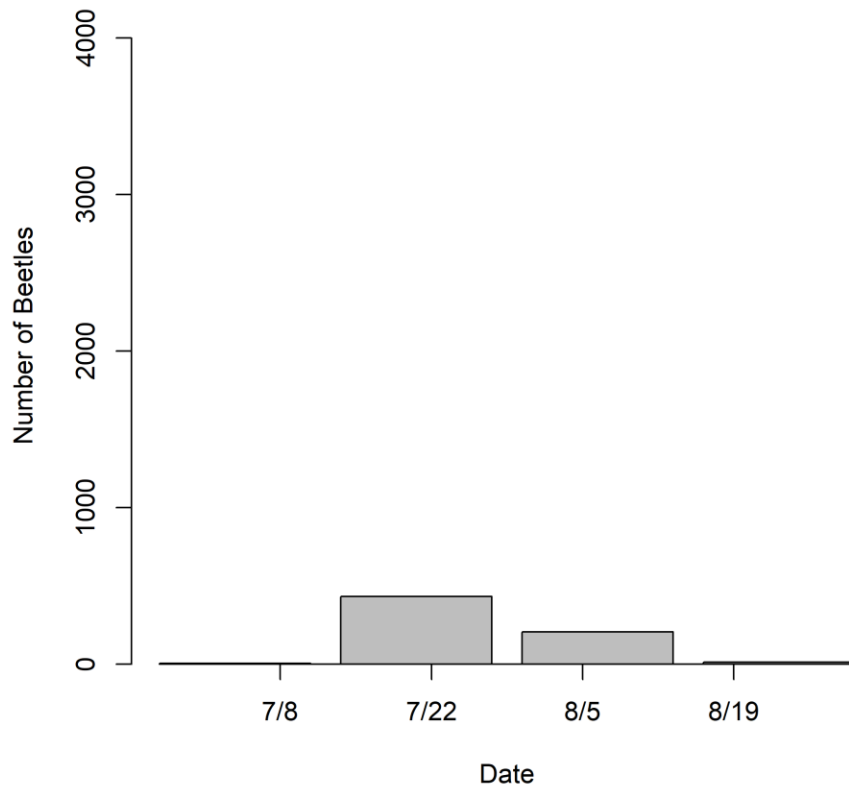


Figure 16: Peace Garden number of Japanese beetles at 4 sampling times. There was an average of 161 beetles across the 4 sampling times. There were less beetles than the overall average (434).



Figure 17: Aerial view of Thomas Sadler Bird Sanctuary and Peace Garden.

9. Longfellow Garden garden shed

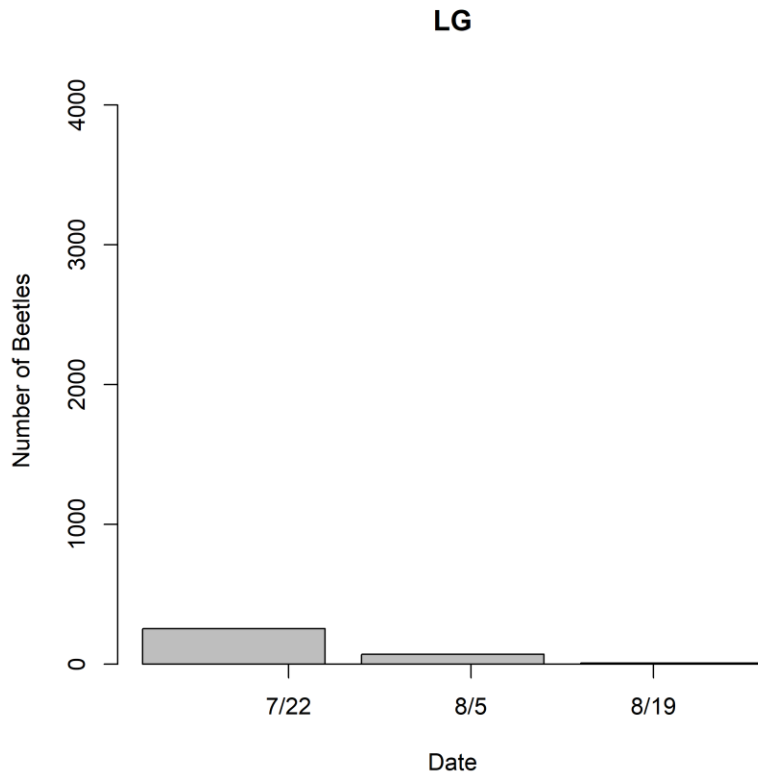


Figure 18: Longfellow Garden number of Japanese beetles at 4 sampling times. There was an average of 110 beetles across the 4 sampling times. There were less beetles than the overall average (434).



Figure 19: Aerial view of Longfellow Gardens

### 10. Loring Park Garden garden shed

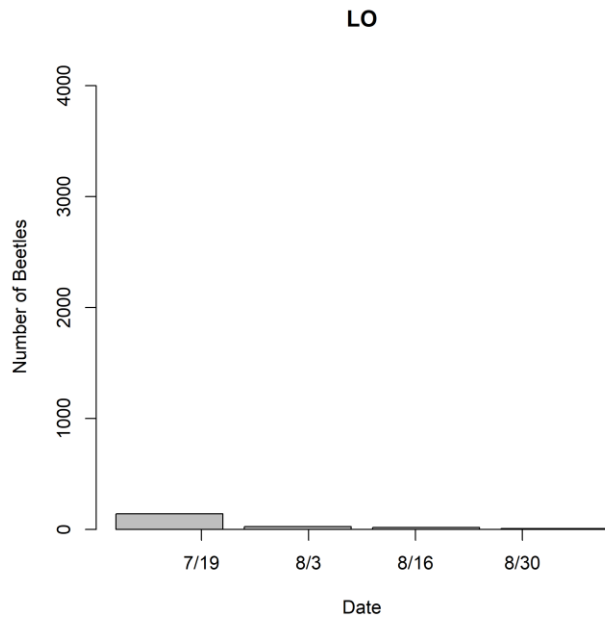


Figure 20: Loring Park Garden number of Japanese beetles at 4 sampling times. There was an average of 49 beetles across the 4 sampling times. There were less beetles than the overall average (434).

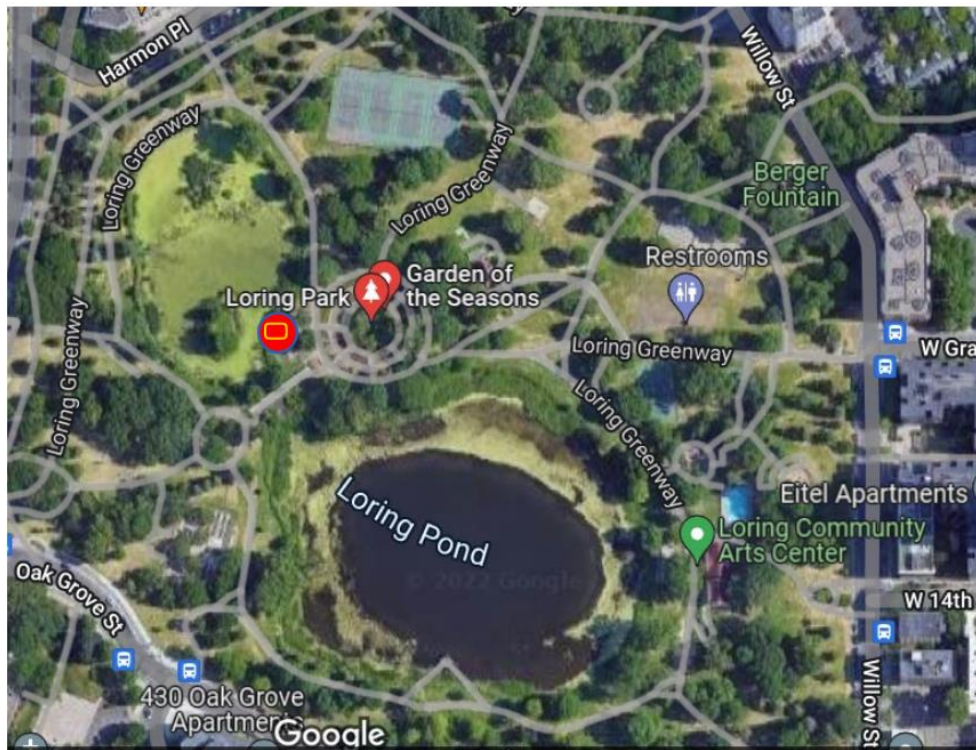


Figure 21: Aerial view of Loring Park.

## 11. Minneapolis Sculpture Garden maintenance building

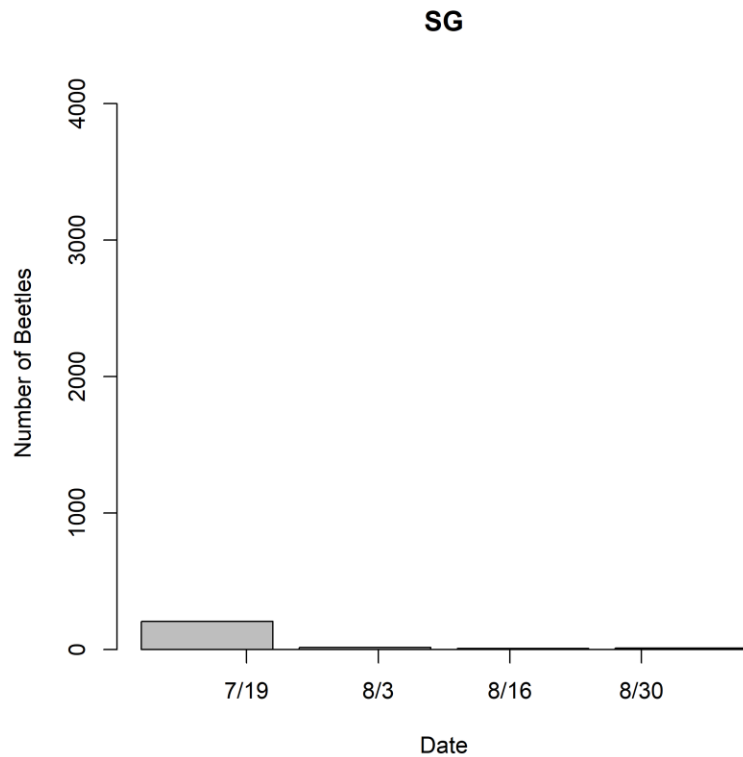


Figure 22: Sculpture Garden number of Japanese beetles at 4 sampling times. There was an average of 60 beetles across the 4 sampling times. There were less beetles than the overall average (434).

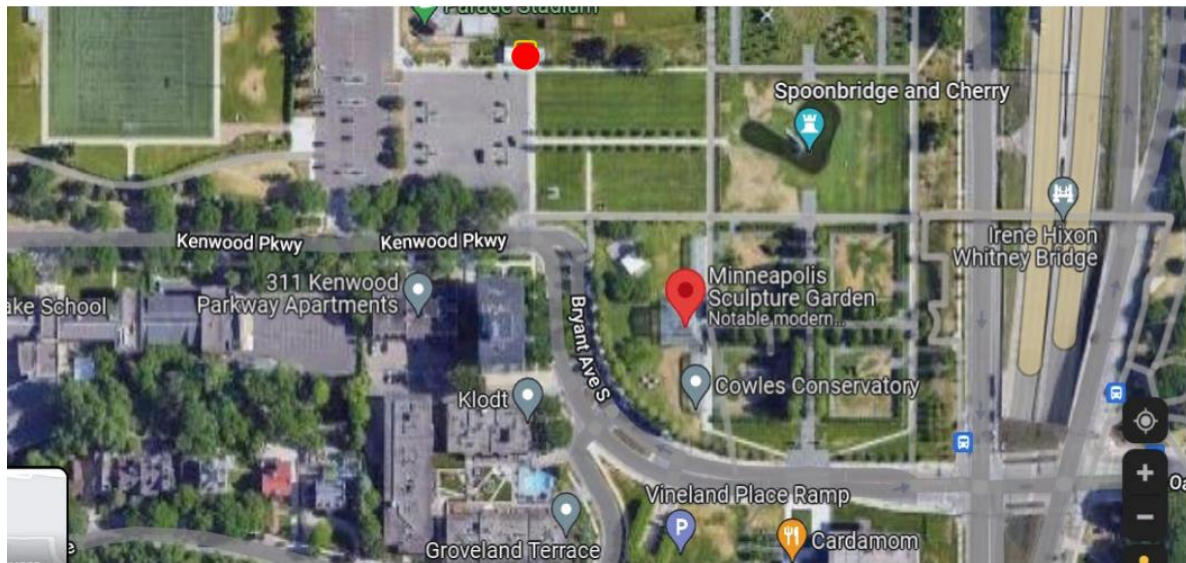


Figure 23: Aerial view of Minneapolis Sculpture Garden.