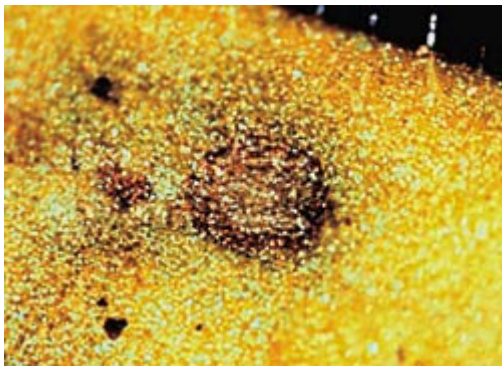


Western Flower Thrips Feeding Scars and Tospovirus Lesions on Petunia Indicator Plants

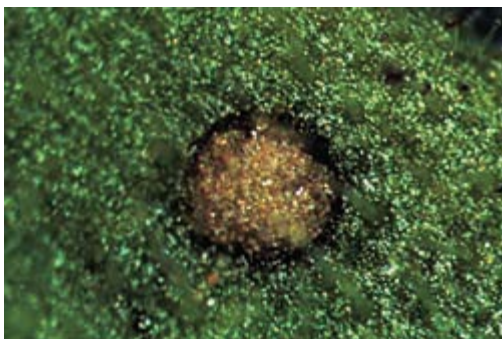


Lesions on petunia leaves caused by the feeding of western flower thrips (WFT).

- The white lesions on the right leaf are caused by WFT that are not carrying the tospovirus.
- The dark lesions on the left leaf are caused by WFT that are carrying the tospovirus.



A closer look at a tospovirus lesion as it first appears on the petunia leaf.



An older lesion on a petunia leaf. As the lesion ages, its center changes from black to tan.

From, Robb, K. L., C. Casey, A. Whitfield, and L. Campbell. 1998. A new weapon to fight INSV and TSVW. *Grower Talks* 61(12): 63-73. Photographs by Jack Kelly Clark; used with permission.

Table 1. Host plants for tospoviruses TSWV and INSV listed by greenhouse crop type.

	<u>TSWV</u>	<u>INSV</u>		<u>TSWV</u>	<u>INSV</u>		<u>TSWV</u>	<u>INSV</u>
<u>Bedding Plants</u>			Weeping fig	+		Rhododendron	+	
Begonia	+	+	Zebra plant		+	Ruscus		+
Blue daisy	+		<u>Non-Ornamentals</u>			Schizanthus	+	+
Browallia		+	Broadbean	+		Snapdragon		+
Caladium		+	Celery	+		Statice	+	
Celosia		+	Endive	+		Stephanotis	+	+
Coleus		+	Garden bean	+		Streptocarpus	+	+
Dahlia	+	+	Lettuce	+		Thanksgiving cactus		+
Dusty miller		+	Pepper	+	+	<u>Perennials</u>		
Eggplant	+	+	Spinach	+	+	Ajuga		+
Fuschia	+		Tarragon		+	Aster	+	
Gazania	+	+	Tomato	+	+	Barberry		+
Geranium	+	+	African violet	+	+	Bee balm		+
Gomphrena		+	Alstromeria	+	+	Bishop's weed		+
Impatiens	+	+	Amazon lily		+	Black-eyed susan		+
Lobelia	+	+	Amaryllis	+	+	Campanula		+
Maltese cross		+	Anemone		+	Catnip		+
Marigold		+	Anthurium	+	+	Columnnea	+	+
Moss rose	+	+	Ardisia	+	+	Delphinium		+
Nasturtium		+	Asiatic lily	+	+	English daisy		+
New Guinea Impatiens		+	Bromelia	+		Forget-me-not		+
Petunia	+	+	Calceolaria		+	Foxglove		+
Phlox		+	Calla lily	+		Gaillardia	+	
Salvia	+	+	Chrysanthemum	+	+	Gentian		+
Sea lavender	+		Clivia	+		Hosta		+
Star of Bethlehem	+		Cyclamen	+	+	Osteospermum	+	
Stock		+	Eucharis	+		Pentstemon		+
Strawflower	+	+	Exacum		+	Peony		+
Swan River daisy			Florist's cineraria	+		Physostegia		+
Verbena		+	Gardenia	+	+	Polemonium		+
Zinnia		+	Gerbera	+	+	Poppy		+
<u>Foliage plants</u>			Gladiola	+	+	Red Valerian	+	+
Arrowhead vine		+	Gloxinia	+	+	Sedum		+
Bird's Nest fern			Hoya		+	Shasta daisy		+
Chinese evergreen	+	+	Hydrangea	+	+	Turtlehead		+
Cordyline	+	+	Lantana	+		Veronica		+
Dieffenbachia	+		Lipstick plant		+	Vinca	+	+
Dracaena	+	+	Lisianthus	+	+			
			Mother of thousands		+			

Japanese aralia	+		Oncidium	+		<u>Weeds</u>	
Kalanchoe	+	+	Oxalis		+	Bittercress	+
Maranta	+	+	Peace lily	+		Chickweed	+
Oleander	+		Peperomia	+	+	Dandelion	+
Pedilanthus		+	Phalaenopsis	+		Field bindweed	+
Piggyback plant		+	Primula	+	+	Galinsoga	+
Pothos		+	Rain daisy	+		Horseweed	+
Rubber tree	+	+	Ranunculus	+	+	Jewelweed	+
Schefflera		+				Lamb's quarters	+
Swedish Ivy		+					
Tradescantia		+					